

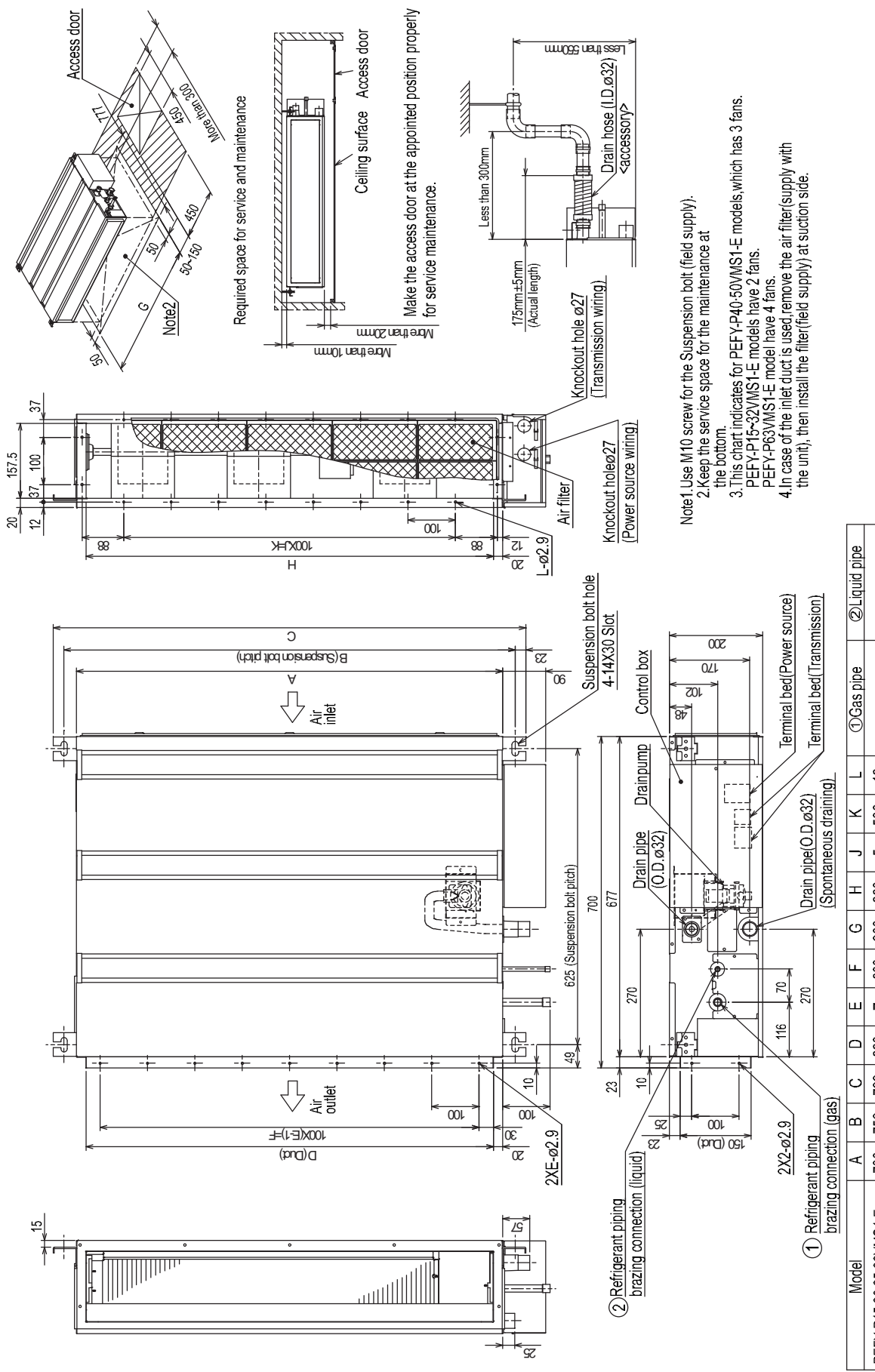
# 2. EXTERNAL DIMENSIONS

DATA G9

PEFY

## PEFY-P15,20,25,32,40,50,63VMS1-E

Unit : mm

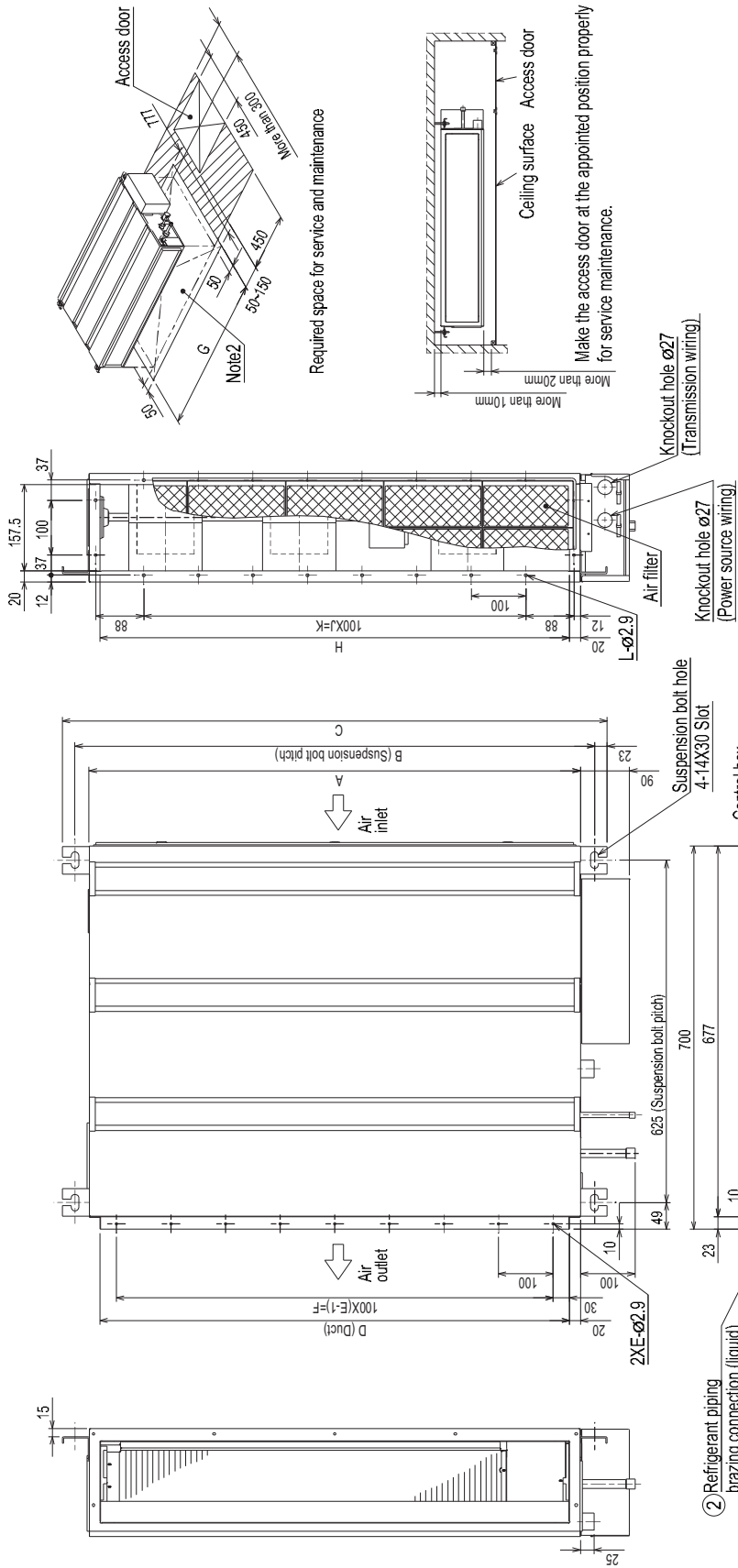


- Note1. Use M10 screw for the Suspension bolt (field supply).
- Note2. Keep the service space for the maintenance at the bottom.
- Note3. This chart indicates for PEFY-P40-50VMS1-E models, which has 3 fans. PEFY-P15-32VMS1-E models have 2 fans. PEFY-P63VMS1-E model have 4 fans.
- Note4. In case of the inlet duct is used, remove the air filter (supply with the unit), then install the filter (field supply) at suction side.

Model	A	B	C	D	E	F	G	H	J	K	L	① Gas pipe	② Liquid pipe
PEFY-P15,20,25,32VMS1-E	700	752	798	660	7	600	800	660	5	500	16	ø12.7	ø6.35
PEFY-P40VMS1-E	900	952	998	860	9	800	1000	860	7	700	20	ø12.7	ø6.35
PEFY-P50VMS1-E	1100	1152	1198	1060	11	1000	1200	1060	9	900	24	ø15.88	ø9.52

PEFY-P15,20,25,32,40,50,63VMS1L-E

Unit : mm



- Note 1 Use M10 screw for the Suspension bolt (field supply).  
 Note 2 Keep the service space for the maintenance at the bottom.  
 Note 3 This chart indicates for PEFY-P40-50VMS1L-E models, which has 3 fans. PEFY-P15-32VMS1L-E models have 2 fans. PEFY-P63VMS1L-E model have 4 fans.  
 Note 4 In case of the inlet duct is used, remove the air filter (supply with the unit), then install the filter (field supply) at suction side.

Model	A	B	C	D	E	F	G	H	J	K	L	① Gas pipe	② Liquid pipe
PEFY-P15,20,25,32VMS1L-E	700	752	798	660	7	600	800	660	5	500	16	ø12.7	ø6.35
PEFY-P40VMS1L-E	900	952	998	860	9	800	1000	860	7	700	20	ø12.7	ø6.35
PEFY-P50VMS1L-E	1100	1152	1198	1060	11	1000	1200	1060	9	900	24	ø15.88	ø9.52