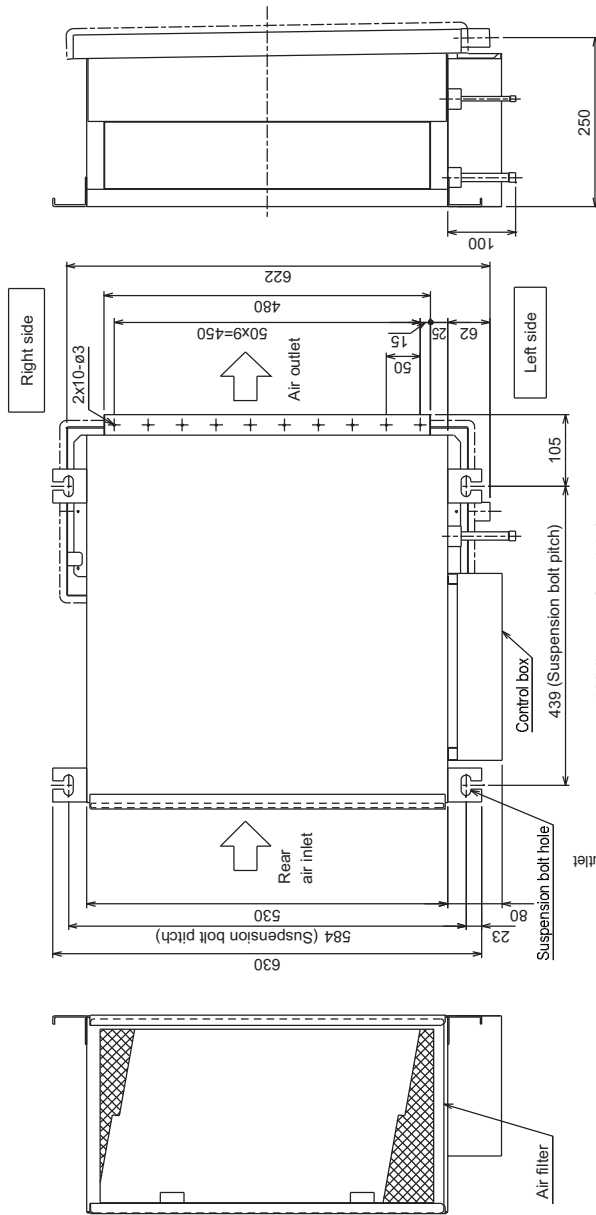


## PEFY-P20,25,32VMR-E-L/R

Unit : mm



- Note 1. Use M10 screw for the suspension bolt (field supply).  
 50mm or below of clearance between the indoor unit top and the end of the suspension bolt will make maintenance of the indoor heat exchanger easier.
2. Access door of 450mmx450mm at the ceiling under the drain pan should be designed for heat exchanger cleaning and maintenance.
3. This drawing shows the left piping specification. The symmetry shows the right piping specification.  
 Model name: <Left piping> PEFY-P20 · 25 · 32/VMR-E-L  
 <Right piping> PEFY-P20 · 25 · 32/VMR-E-R
4. Period cleaning of drain pan will prevent water overflowing.  
 Gradient piping design is needed for water draining.
5. The inlet direction can be changed between rear inlet and bottom inlet.  
 Keep the inlet space between the ceiling and the unit in case of bottom inlet.

