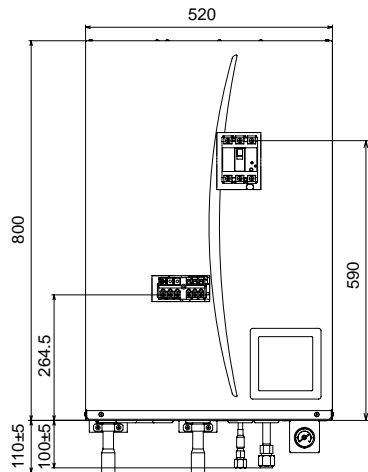
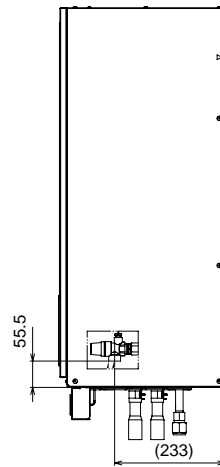


## 2.2 Hydrobox

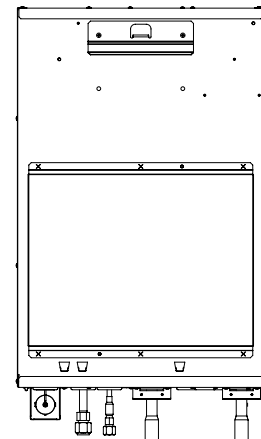
### <EHSC> (Split model system)



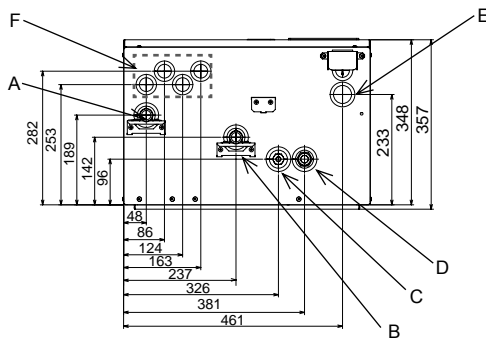
<Front>



<Side>



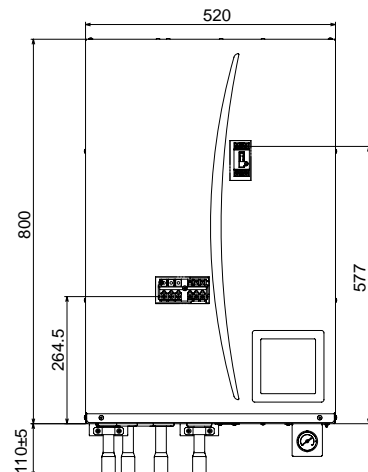
<Rear>



<View from below>

Letter	Pipe description	Connection size/type
A	Space heating/Indirect DHW cylinder (primary) return connection	28 mm/Compression
B	Space heating/Indirect DHW cylinder (primary) flow connection	28 mm/Compression
C	Refrigerant (Liquid)	9.52 mm/Flare
D	Refrigerant (Gas)	15.88 mm/Flare
E	Discharge pipe (by installer) from pressure relief valve	G1/2" female (valve port within hydrobox casing)
F	Electrical cable inlets	— *The leftmost inlet is for wireless receiver (option)

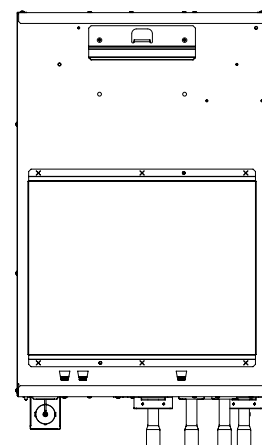
### <EHPX> (Packaged model system)



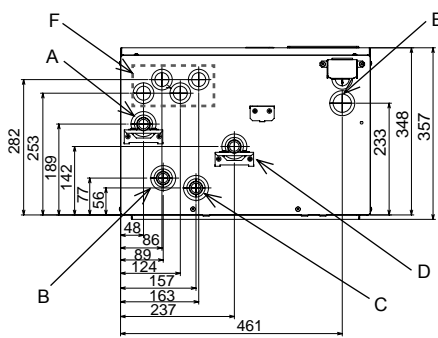
<Front>



<Side>



<Rear>



<View from below>

Letter	Pipe description	Connection size/type
A	Space heating/Indirect DHW cylinder (primary) return connection	28 mm/Compression
B	Flow connection from heat pump	28 mm/Compression
C	Return connection to heat pump	28 mm/Compression
D	Space heating/Indirect DHW cylinder (primary) flow connection	28 mm/Compression
E	Discharge pipe (by installer) from pressure relief valve	G1/2" female (valve port within hydrobox casing)
F	Electrical cable inlets	— *The leftmost inlet is for wireless receiver (option)