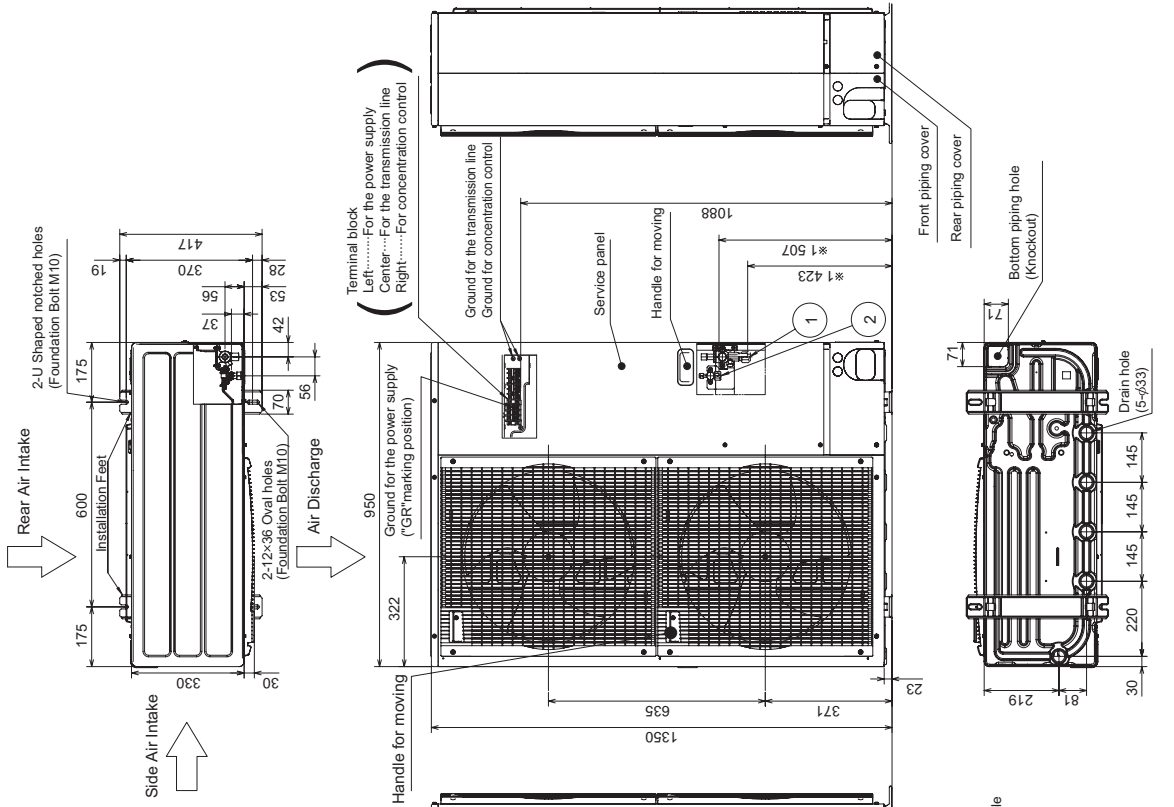


PUMY-P100,125,140YHMB
PUMY-P100,125,140VHMB

Unit : mm

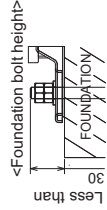


4 PIPING-WIRING DIRECTIONS

Piping and wiring connections can be made from 4 directions: front, right, rear and below.

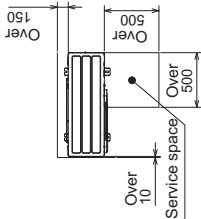
3 FOUNDATION BOLTS

Please secure the unit firmly with 4 foundation (M10) bolts. (Bolts and washers must be purchased locally.)



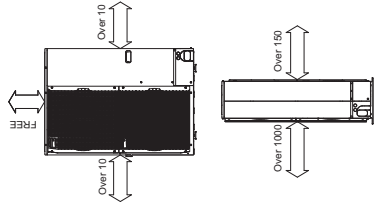
2 SERVICE SPACE

Dimensions of space needed for service access are shown in the below diagram.



1 FREE SPACE (Around the unit)

The diagram below shows a basic example. Explanation of particular details is given in the installation manuals etc.



Example of Notes

- ① Refrigerant GAS pipe connection (FLARE) φ15.88(5/8 inch)
- ② Refrigerant LIQUID pipe connection (FLARE) φ9.52(3/8 inch)
- *1.....Indication of STOP VALVE connection location.

Piping Knockout Hole Details

